

HOW TO CREATE AND USE A FORM TO COLLECT PARTICIPANT INFORMATION

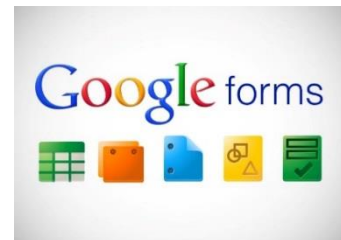
Capture and summarize information about students, artwork, district representatives, and more using a form!



There are many ways you can use a form for Youth Art Month:

- Capture contact information from Teachers
- Online Registration for Art Shows/Exhibits
- Student Art or Photography Release
- Track Expenses, Donors, Sponsors, Media Events
- Survey Teachers

- If you are not familiar with Form creators, there are multiple options available – for free!
- One of the easiest to use is Google Forms.
- Any data collected through a Google Form can be saved in a spreadsheet, making it easy to keep track of information.
- [Doodle Forms](#) is another option with free and premium alternatives



For complete instructions on creating a Google Form, click [here](#), or above on the Google forms image.

Here are some brief instructions to help you get started:

STEP 1

Set up a new [form or survey](#)

Go to forms.google.com

Click Blank +

A new form will open

STEP 2

Edit and format a form

Add, [edit](#), or format text

Add, [edit](#), or format images

Add, [edit](#), or format videos

STEP 3

Send or share your form

[Send your form](#) to others and collect their responses

(Instructions from Google Docs Editor Help)



2020/2021 Youth Art Month Survey

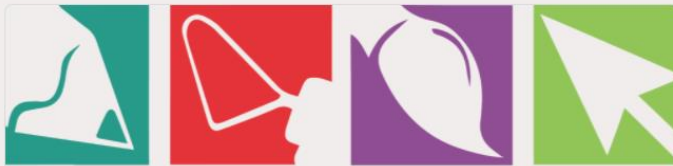
This form is being used to collect information on art submissions for the 2021 state art exhibit.

What is the name of your school

Short answer text



Survey in Edit Mode



2020/2021 Youth Art Month Survey

This form is being used to collect information on art submissions for the 2021 state art exhibit.

What is the name of your school

Your answer

Submit

Survey in Preview Mode